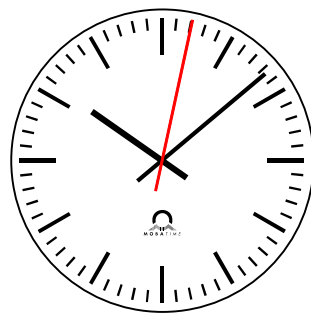
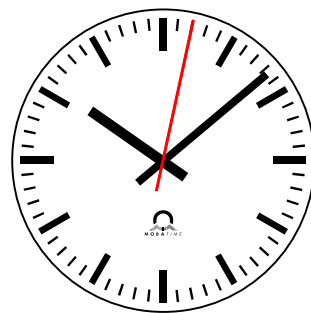


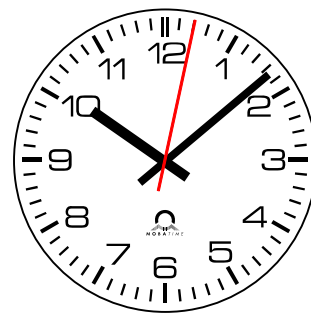
ZB / dial 000  
 Stunden- / Minutenzeiger:  
 hour / minute hand:  
 Ø 30: 116054 / 116061  
 Ø 40: 116190 / 116186



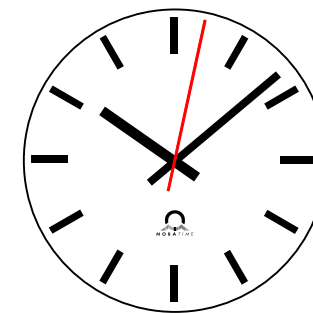
ZB / dial 160  
 Stunden- / Minutenzeiger:  
 hour / minute hand:  
 Ø 25: 100821 (Set)  
 Ø 30: 100822 (Set)  
 Ø 40: 100824 (Set)



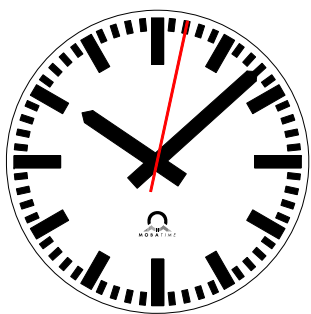
ZB / dial 200  
 Stunden- / Minutenzeiger:  
 hour / minute hand:  
 Ø 25: 116052 / 116059  
 Ø 30: 116054 / 116061  
 Ø 40: 116190 / 116186



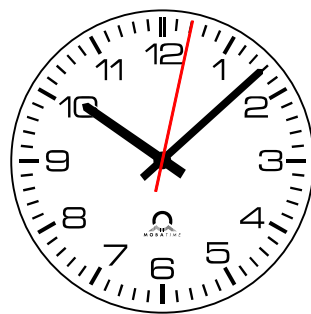
ZB / dial 210  
 Stunden- / Minutenzeiger:  
 hour / minute hand:  
 Ø 25: 100821 (set)  
 Ø 30: 116054 / 116061  
 Ø 40: 116190 / 116186



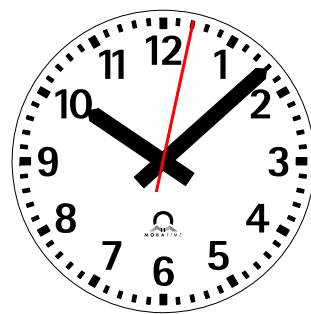
ZB / dial 230  
 Stunden- / Minutenzeiger:  
 hour / minute hand:  
 Ø 25: 116052 / 116059  
 Ø 30: 116054 / 116061  
 Ø 40: 116190 / 116186



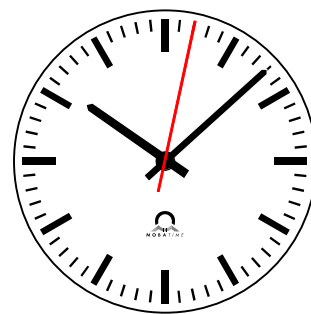
ZB / dial 300  
 Stunden- / Minutenzeiger:  
 hour / minute hand:  
 Ø 25: 105873 / 105999  
 Ø 30: 105874 / 106000  
 Ø 40: 105881 / 106001  
 Ø 50: 105796 / 105912  
 Ø 60: 105797 / 105913  
 Ø 80: 105800 / 105916



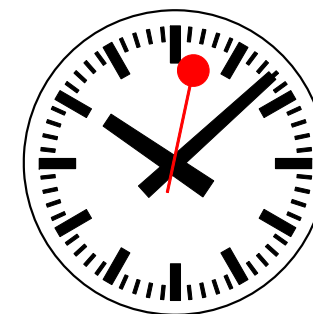
ZB / dial 310  
 Stunden- / Minutenzeiger:  
 hour / minute hand:  
 Ø 25: 105871 / 105995  
 Ø 30: 105872 / 105996  
 Ø 40: 105882 / 105997



ZB / dial 315  
 Stunden- / Minutenzeiger:  
 hour / minute hand:  
 Ø 50: 105796 / 105912  
 Ø 60: 105797 / 105913  
 Ø 80: 105800 / 105916

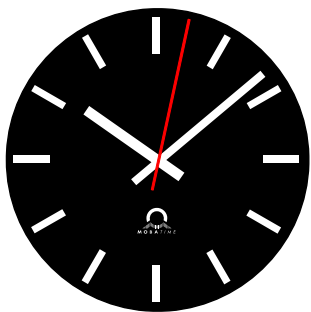


ZB / dial 360  
 Stunden- / Minutenzeiger:  
 hour / minute hand:  
 Ø 25: 105871 / 105995  
 Ø 30: 105872 / 105996  
 Ø 40: 105882 / 105997



ZB / dial 101  
 Stunden- / Minutenzeiger:  
 hour / minute hand:  
 Ø 25: 116198 / 116195  
 Ø 30: 116199 / 116196  
 Ø 40: 116200 / 116197  
 Ø 50: 109550 / 109557  
 Ø 60: 109551 / 109558  
 Ø 80: 109552 / 109559

Sekundenzeiger für ZB / second hand for dial 100: movement series 40 : Ø 30: 106113; Ø 40: 106114  
 movement series 190: Ø 25: 106111; Ø 30: 106112; Ø 40: 106115; Ø 50: 106116; Ø 60: 106117; Ø 80: 106118; Ø 100: 106119  
 Sekundenzeiger für ZB / second hand for dials 160 – 360: Ø 25: 116065; Ø 30: 116066; Ø 40: 116067; Ø 50: 106035; Ø 60: 106036; Ø 80: 106037  
 Sekundenzeiger mit Loch für ZB / second hand with hole for dials 300, 315: Ø 50: 106041; Ø 60: 106042; Ø 80: 106043



ZB / dial 240

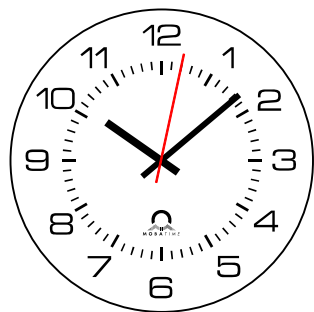
Stunden- / Minutenzeiger:

hour / minute hand:

Ø 25: 116052 / 116059

Ø 30: 116054 / 116061

Ø 40: 116190 / 116186



ZB / dial 220

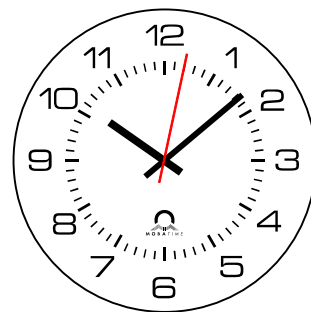
Stunden- / Minutenzeiger:

hour / minute / sek hand:

SEx 40:

Ø 30: 116052 / 116059 / 116065

Ø 40: 116054 / 116061 / 166066



ZB / dial 220

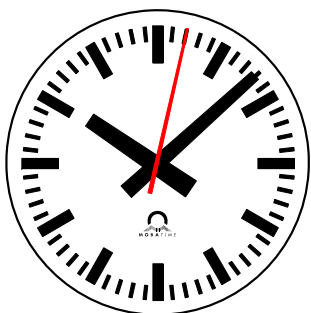
Stunden- / Minutenzeiger:

hour / minute / sek hand:

SEW 00, FW, DQ:

Ø 30: 109264 / 109342 / 106075

Ø 40: 100933 / 100914 / 106075



ZB / dial 120

Stunden- / Minutenzeiger:

hour / minute hand:

Ø 25: 116198 / 116195

Ø 30: 116199 / 116196

Ø 40: 116200 / 116197

Ø 50: 109550 / 109557

Ø 60: 109551 / 109558

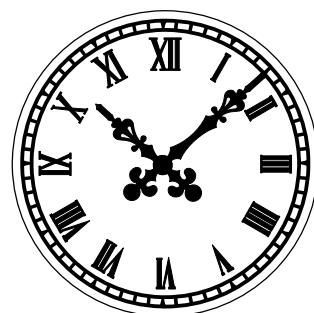
Ø 80: 109552 / 109559

Sekundenzeiger

Ø 25: 116065 Ø 30: 116066

Ø 40: 106115 Ø 50: 106035

Ø 60: 106036 Ø 80: 106037



ZB / dial 936

ZB: Ø 50: 110068 (PL)

ZB: Ø 60: 110056 (PL)

ZB: Ø 60: 110066 (ML)

ZB: Ø 80: 110060 (PL)

Stunden- / Minutenzeiger:

hour / minute hand:

Ø 50: 109414 (pair)

Ø 60: 109415

Ø 80: 100833